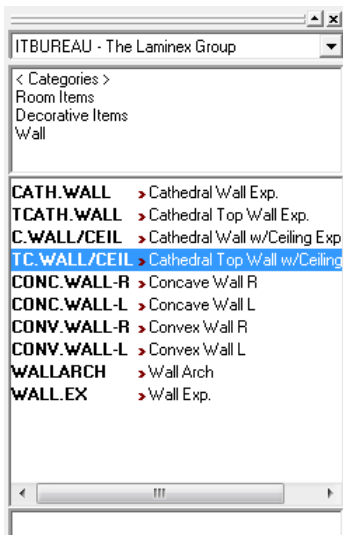


Angled Ceilings

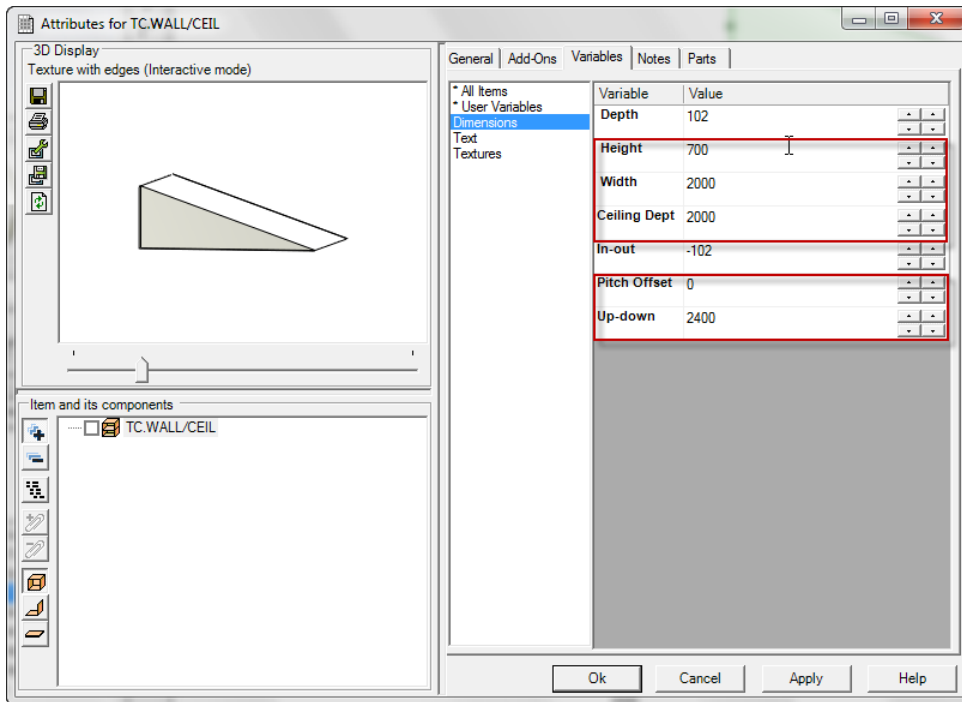
Being able to design with angled ceilings is useful in providing the customer a near-like impression of the space in particular the available height

1. Double left-click **Room Items, Decorative items, Wall, TC.WALL/CEIL >Cathedral Wall w/Ceiling**
2. There exist a number of different wall and ceiling options here for this example we will use that outlined



3. Holding the left mouse button, drag and drop the item inside the placement zone of the wall you wish to attach to.
4. Using Edit Box, specify its position (I.e Wall Left) and width (similar placing a fixed room item). Press **ENTER**.

5. Right-click on the item and left-click attributes.



Here we can specify a height of the pitch, width, ceiling depth, pitch offset and up-down value to see appropriate wall area is covered.

